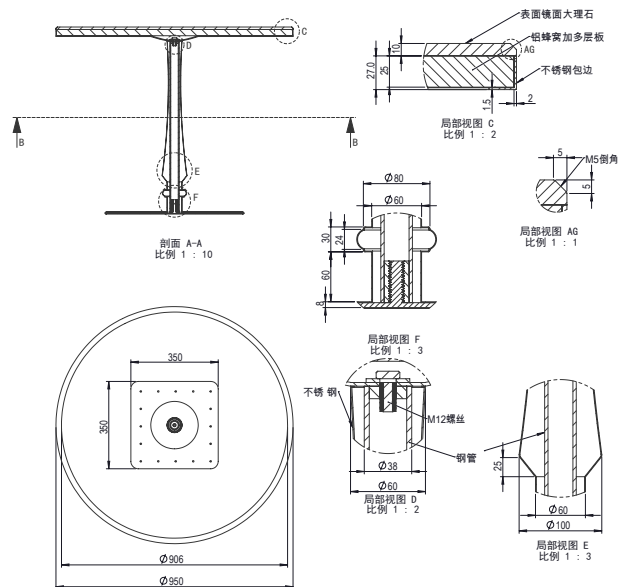


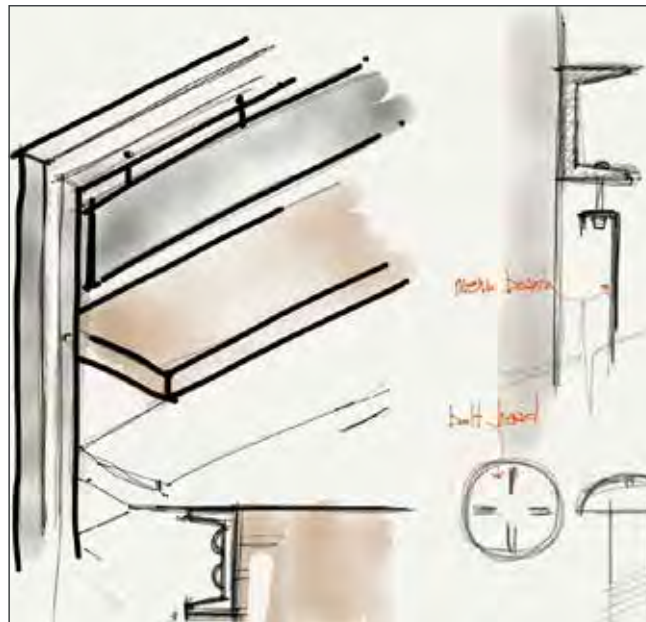


FURNITURE DESIGN PORTFOLIO
家具设计项目目录

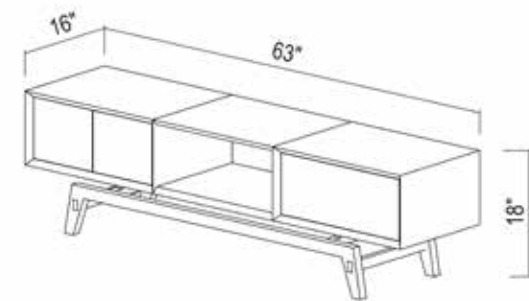
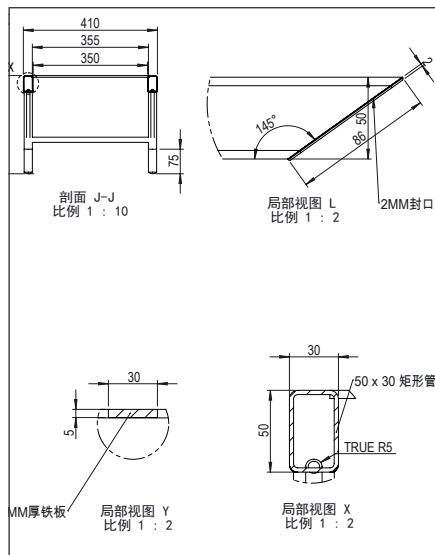
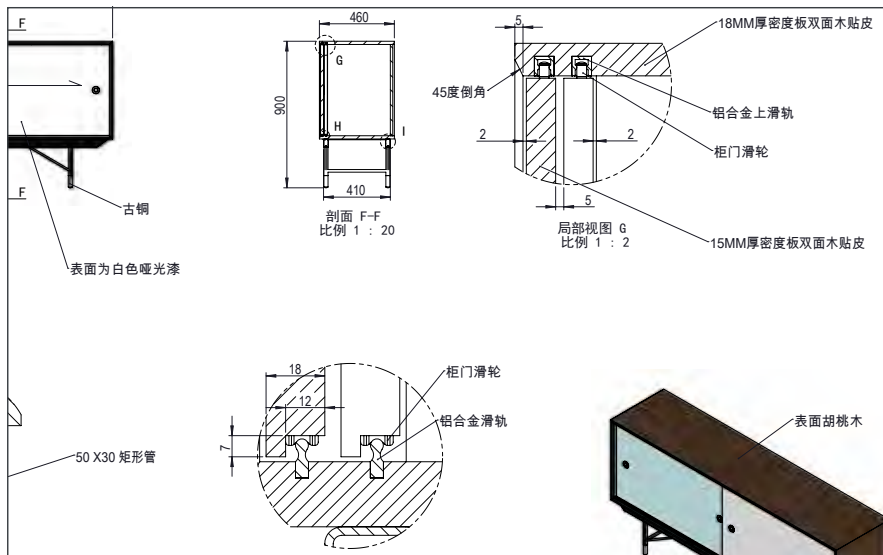
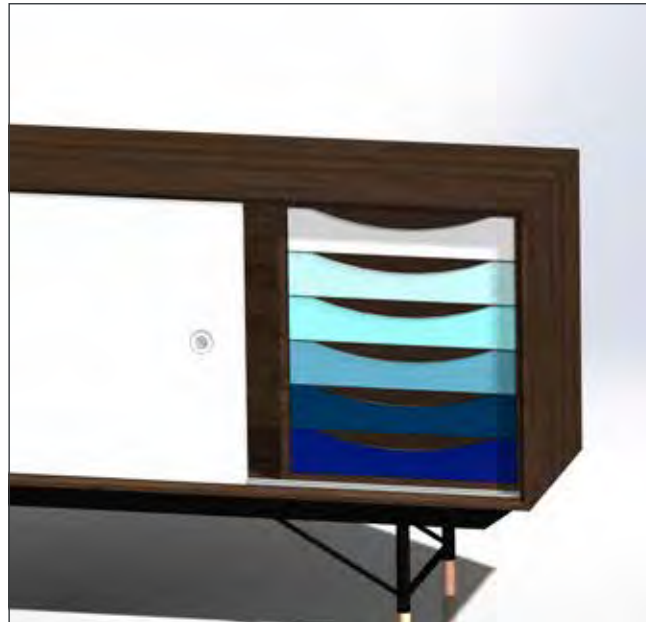


POP BRASSERIE
上海SHANGHAI
MARCH 2015

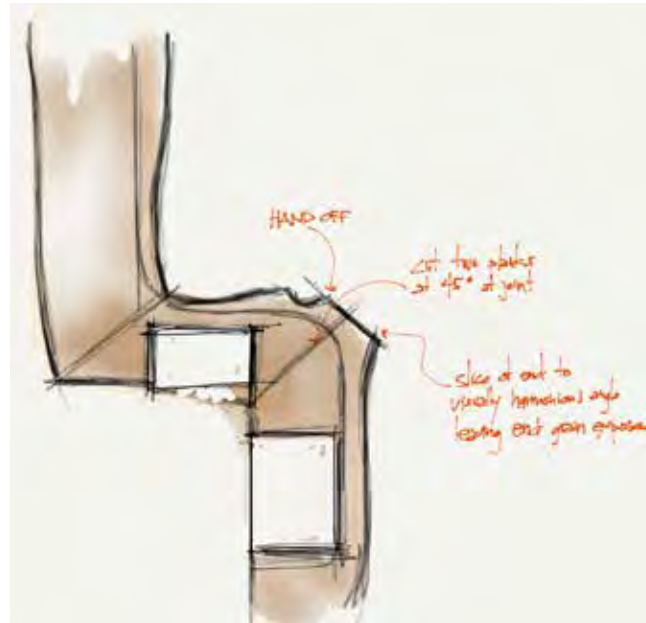
ASIG
DESIGN
杰瑞设计工作室



STARBUCKS GLOBAL FLAGSHIP
 成都 CHENGDU
 NOVEMBER 2014

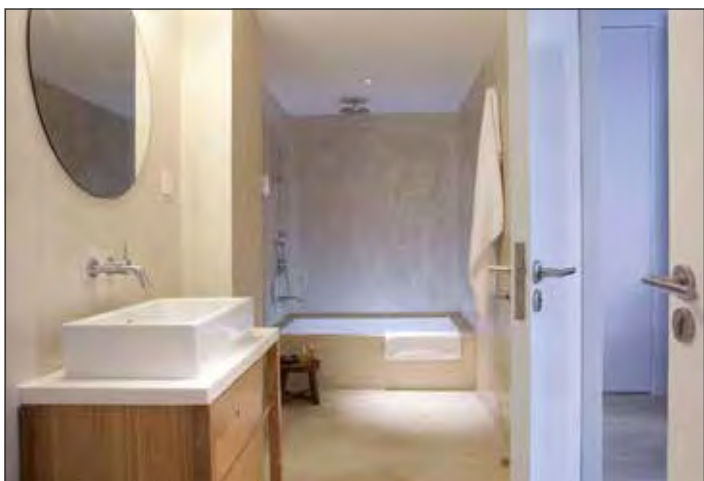
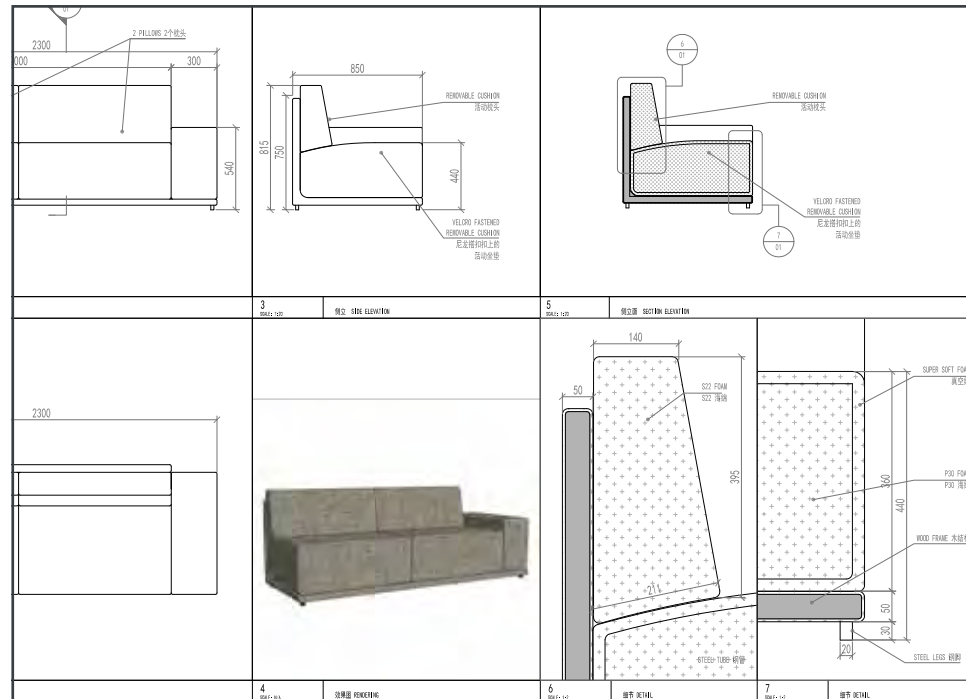


CABINET SERIES
FOR NYEKONCEPT
OCTOBER 2014



STARBUCKS GLOBAL FLAGSHIP
 上海SHANGHAI
 NOVEMBER 2014

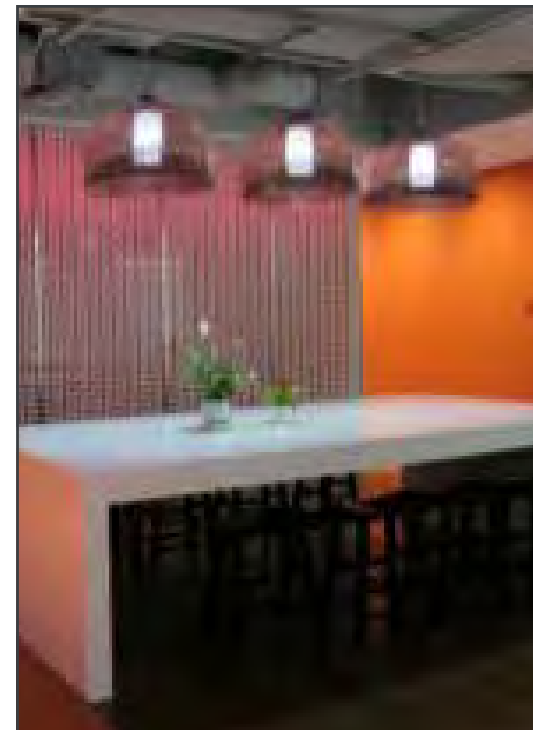
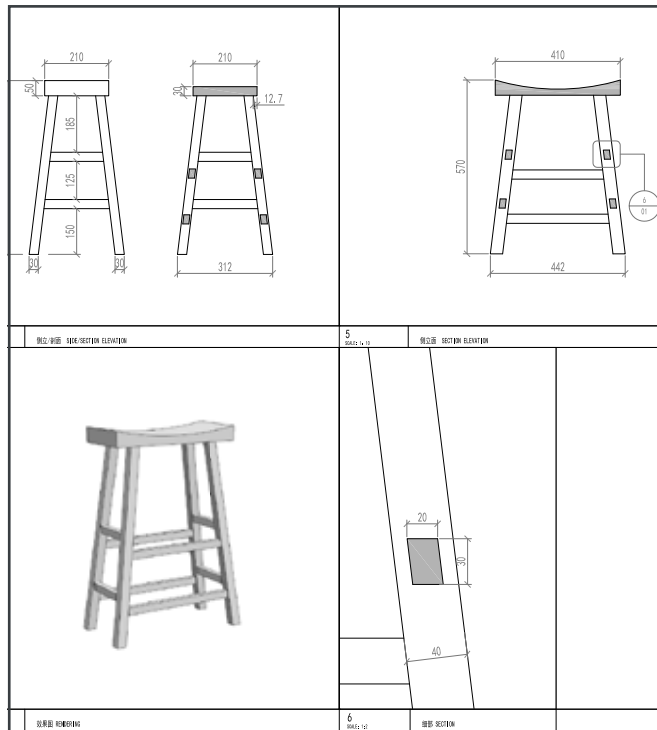




BASE SERVICE APARTMENTS

上海 SHANGHAI

AUGUST 2012



谷歌办公室 GOOGLE OFFICE
 上海 SHANGHAI
 JANUARY 2012

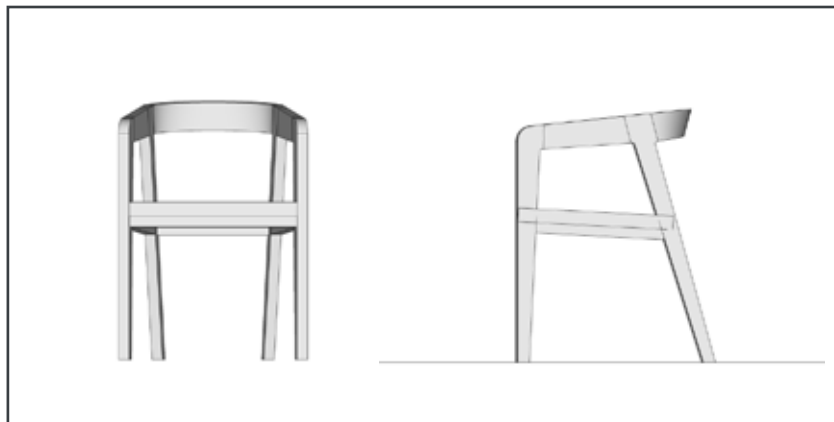


SPECS规格

MATERIAL

SOLID RECLAIMED ELM
NATURAL HARDWAX OIL

材料
老榆木
天然植物木蜡油



贝杰麦肯扶手椅子 J&M ARMCHAIR

OCTOBER 2011



SOLID RECLAIMED ELM
LOW-VOC LAQUER

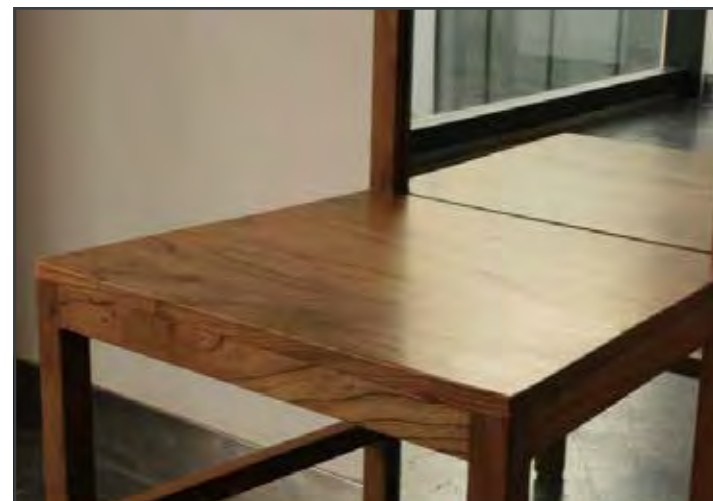
老榆木
环保硝基漆



厨房底柜 KOESDJOJO KITCHEN
AUGUST 2011



餐厅 IFLAT RESTAURANT
MAY 2011



SOLID RECLAIMED ELM
LOW-VOC LAQUER

老榆木
环保硝基漆



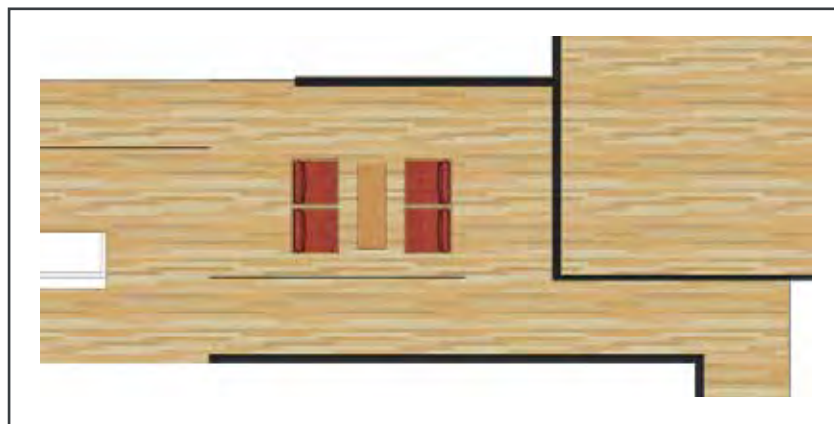
永嘉庭电梯厅 YONGJIA COURT ELEVATOR LOBBY
MARCH 2011

ASIG
DESIGN
杰瑞设计工作室



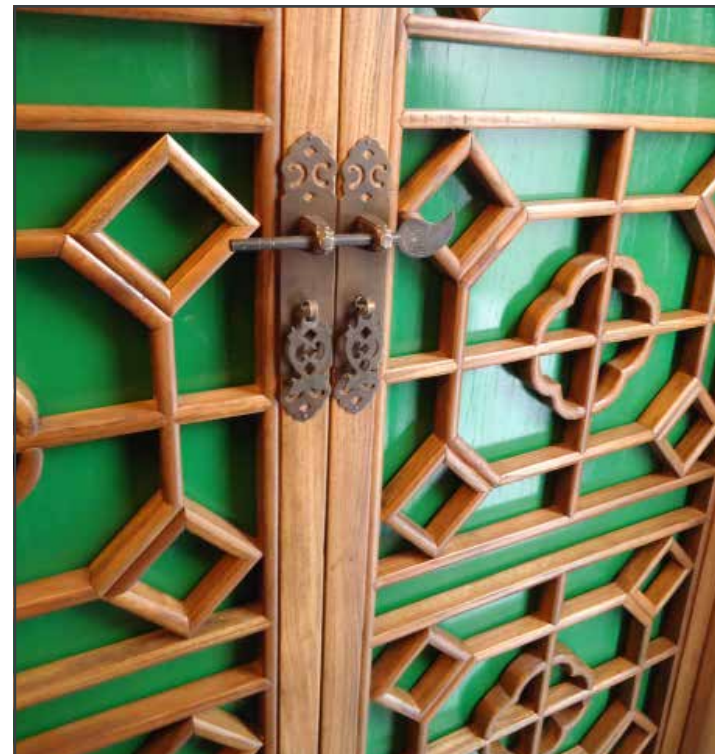
SOLID RECLAIMED ELM
PU RESIN
WOVEN FABRIC

老榆木
聚氨酯涂料
梭织面料



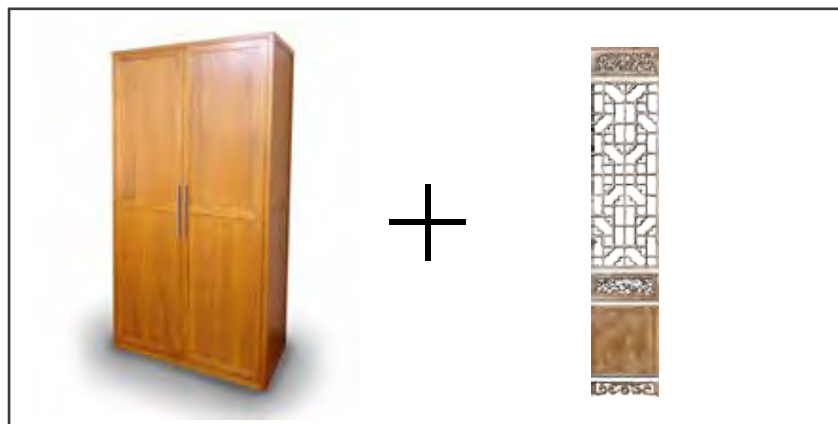
思多而特办公室家具 STOLT-NEILSEN OFFICE LOBBY
MARCH 2011

ASIG
DESIGN
杰瑞设计工作室



SOLID RECLAIMED ELM
LOW-VOC LAQUER

老榆木
环保硝基漆



陈鞋柜 CHAN SHOE CABINETS
FEBRUARY 2011



SOLID RECLAIMED ELM
LOW-VOC LAQUER

老榆木
环保硝基漆



咖啡桌 HROZA COFFEE TABLE
JANUARY 2011



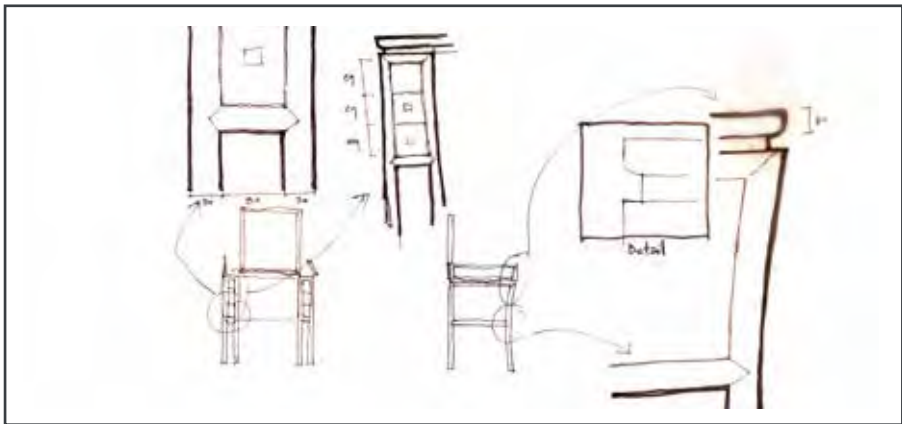
SOLID RECLAIMED ELM
LOW-VOC LAQUER

老榆木
环保硝基漆



咖啡桌 CARON COFFEE TABLE
JANUARY 2011

ASIG
DESIGN
杰瑞设计工作室



SOLID RECLAIMED ELM
LOW-VOC LAQUER

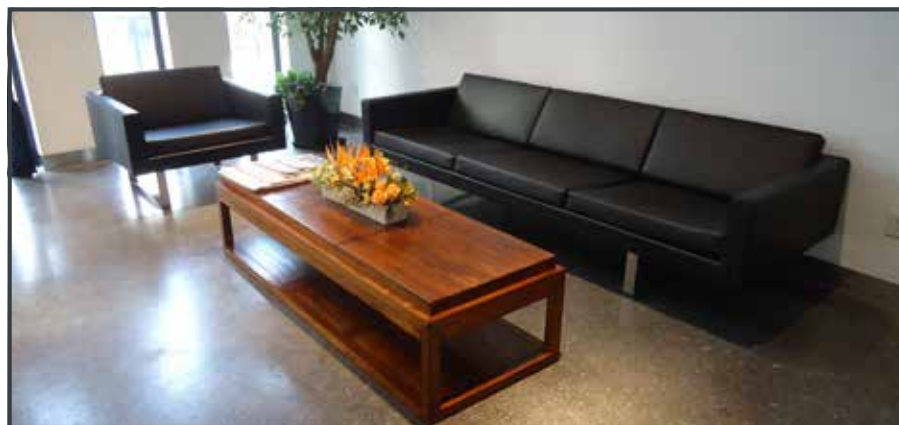
老榆木
环保硝基漆

梳妆台 SARAH DRESSING TABLE
JANUARY 2011

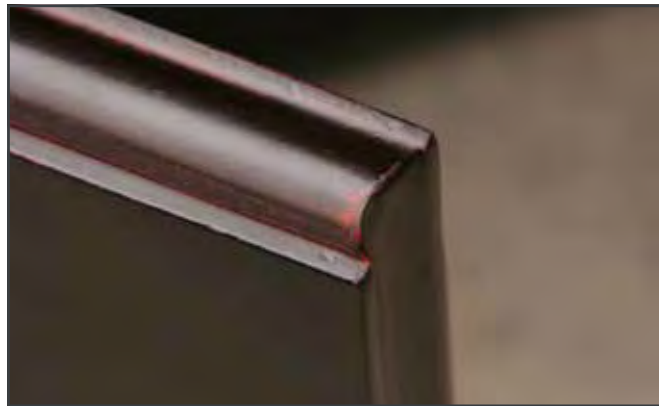


SOLID RECLAIMED ELM
LOW-VOC LAQUER

老榆木
环保硝基漆

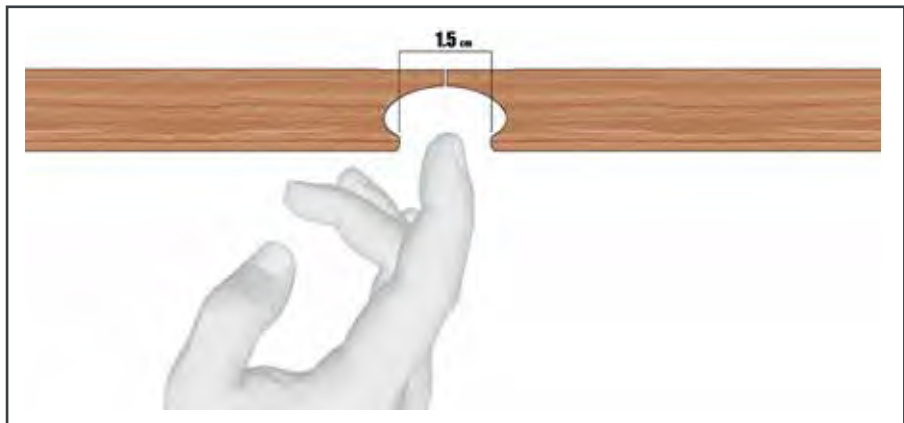


永嘉庭办公室 YONGJIA COURT OFFICE LOBBY
NOVEMBER 2010



SOLID RECLAIMED ELM
LOW-VOC LAQUER

老榆木
环保硝基漆



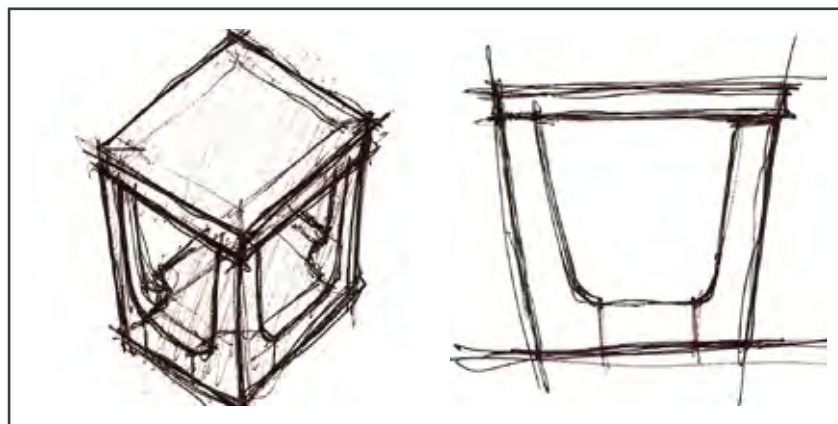
柏希雅休闲椅 DRAZAL SIDEBOARD
OCTOBER 2010

ASIG
DESIGN
杰 瑞 设 计 工 作 室



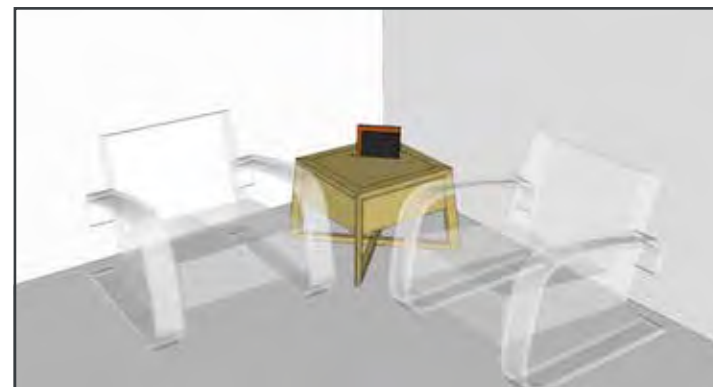
SOLID RECLAIMED ELM
LOW-VOC LAQUER

老榆木
环保硝基漆



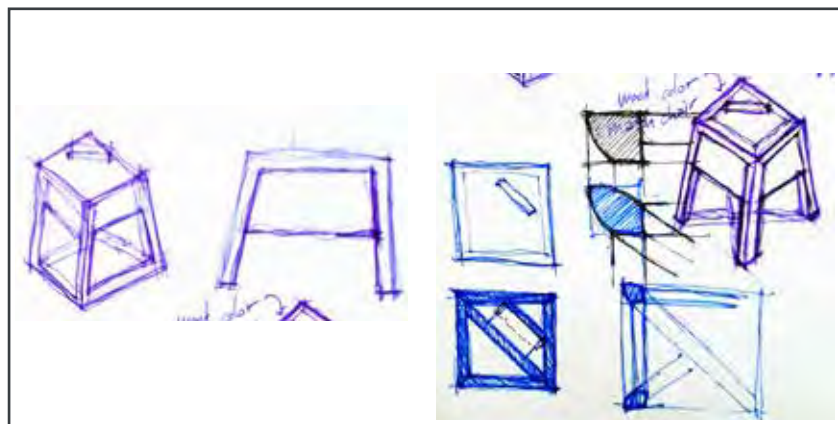
茶几 CAST OCCASIONAL TABLE
AUGUST 2010

ASIG
DESIGN
杰瑞设计工作室



SOLID RECLAIMED ELM
LOW-VOC LAQUER

老榆木
环保硝基漆



法培 茶几 FAB1 OCCASIONAL TABLE
AUGUST 2010

ASIG
DESIGN
杰瑞设计工作室



SOLID ASH
WOVEN FABRIC

水曲柳
梭织面料



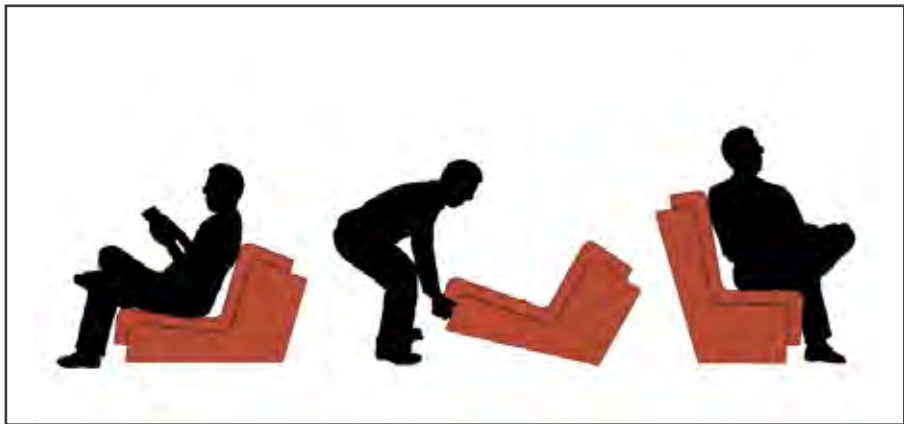
柏希雅休闲椅 VAIXIELLA LOUZE CHAIR
AUGUST 2010

ASIG
DESIGN
杰瑞设计工作室

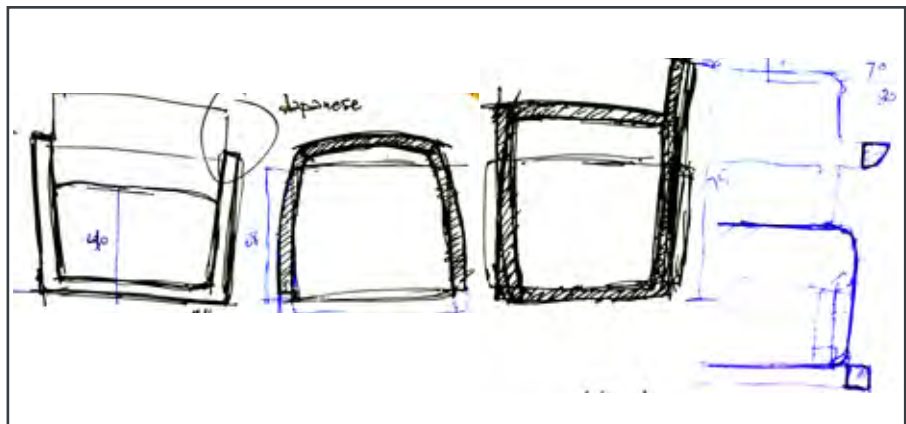


SOLID ASH
WOVEN FABRIC

水曲柳
梭织面料



卡莫泰基休闲椅 KAMAL TAJ SECTIONAL
AUGUST 2010



SOLID RECLAIMED ELM
PU RESIN
WOVEN FABRIC

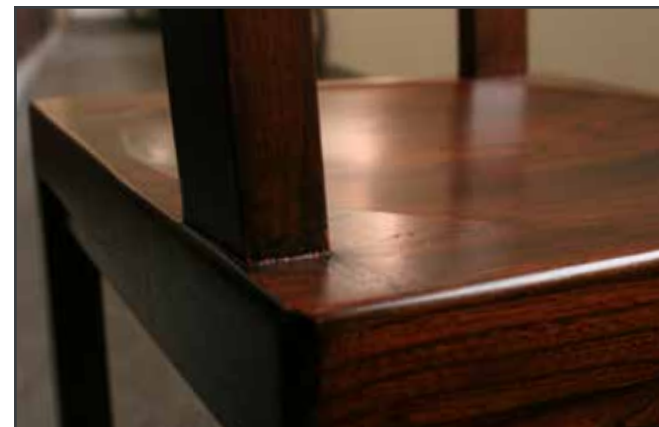
老榆木
聚氨酯涂料
梭织面料

本加扶手椅 BENJA ARMCHAIR
AUGUST 2010



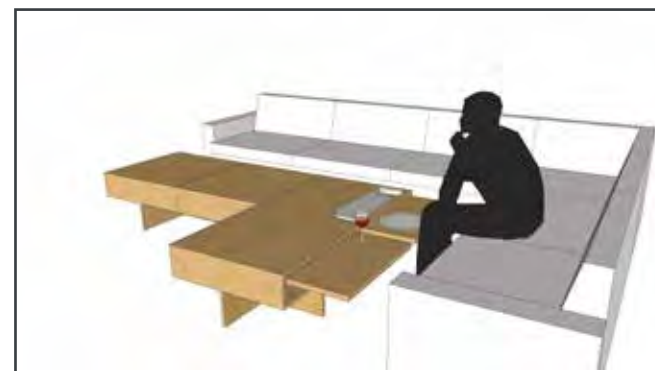
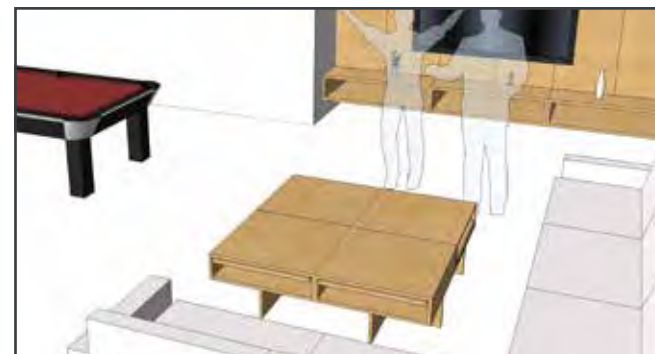
SOLID RECLAIMED ELM
LOW-VOC LAQUER

老榆木
环保硝基漆



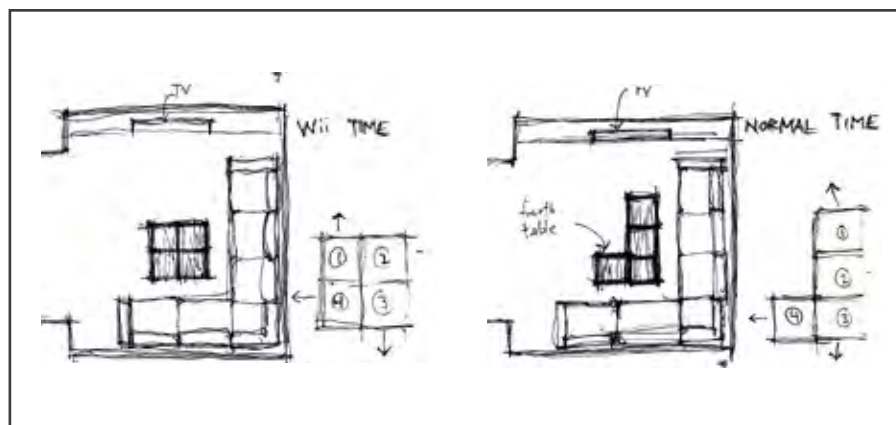
杰皮儿餐套 JP DINING SET
AUGUST 2010

ASIG
DESIGN
杰 琦 设 计 工 作 室



SOLID RECLAIMED ELM
LOW-VOC LAQUER

老榆木
环保硝基漆



多儿咖啡桌 DOYLE COFFEE TABLE

APRIL 2010

ASIG
DESIGN
杰瑞设计工作室



SOLID RECLAIMED ELM
LOW-VOC LAQUER

老榆木
环保硝基漆



璐咖啡桌 LU COFFEE TABLE
JUNE 2009

ASIG DESIGN

210 Taikang Rd, Yard 7, Room 4
Shanghai, China
泰康路210弄7号大院4室
上海市卢湾区

m: +86 15901904476
e: mail@asigdesign.com
w: www.asigdesign.com

